

# DOWNLOAD PICTURES:

<https://www.alu-rex.com/pdf/images-proposal.zip>

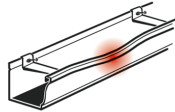
## Our product page preview

**Your Gutter Installation Expert**

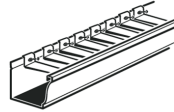
Gutters used to be installed with nails or invisible hangers at 24-inch intervals. While these systems were relatively strong, they left long stretches of aluminum gutter, causing weak spots on the gutters at each section. The Alu-Rex Continuous Hanger systems reinforce the gutter along its entire length.



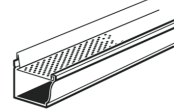
### Continuous Hanger™: Explained



Rain gutters are commonly installed with spaced hangers that cause weak spots on the gutter between each hanger.



To avoid weak spots, hundreds of hangers would need to be added, but this is not a very efficient practice.



With a continuous hanger™, the rain gutters are reinforced along their entire length.

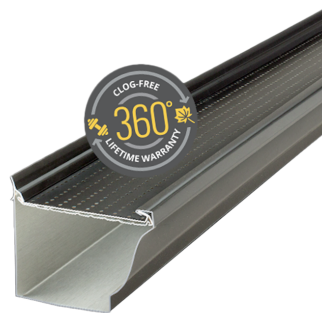
#### NEXT-GEN GUTTER SYSTEM

### DoublePro® Microfiltration Continuous Hanger™

The DoublePro® combines the strength of the Continuous Hanger™ with the benefits of a microfiltration leaf guard, placing it at the forefront of the market by offering the most advanced technologies in gutter systems. Its unique design features two layers of ingeniously perforated industrial-grade aluminum, preventing even the finest debris from entering the gutter while ensuring rainwater flows away from your home. Furthermore, its exceptional strength is ensured by its Continuous Hanger™, allowing it to support up to 425lb per linear foot along the entire length of the gutter.

We highly recommend that all our customers consider the advantages of this revolutionary Alu-Rex product before making a final decision on their gutter system.

[Watch the Video](#)



#### ULTRA-DURABLE GUTTER SYSTEM

### T-Rex® Continuous Hanger™

Our gutter installation experts have made T-Rex® their standard for fastening gutters, thus establishing a high-quality standard. With a design featuring an integrated continuous hanger™, this product stands out for its ability to support up to 250lb per linear foot, ensuring optimal gutter stability along its entire length. Its durability is guaranteed for life, providing our customers with absolute peace of mind regarding its unparalleled strength.

Opting for T-Rex means choosing a gutter solution that is not only reliable and resilient but also ensures peace of mind.

[Watch the Video](#)



## Our product page content:

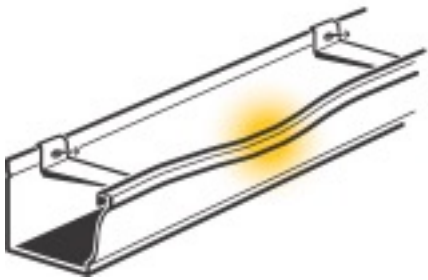
### Your Gutter Installation Expert

Gutters used to be installed with nails or invisible hangers at 24-inch intervals. While these systems were relatively strong, they left long stretches of aluminum gutter, causing weak spots on the gutters at each section. The Alu-Rex Continuous Hanger systems reinforce the gutter along its entire length.

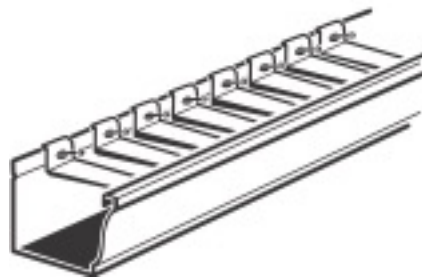


[Embed this video to the left  
<https://youtu.be/qR8Ok5MEnzo> ]

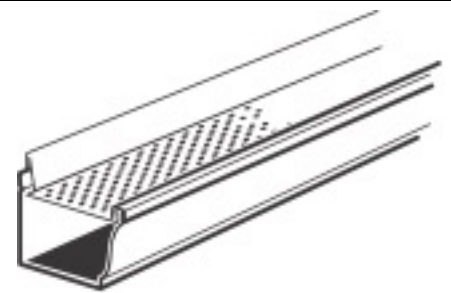
### Continuous Hanger™: Explained



Rain gutters are commonly installed with spaced hangers that cause weak spots on the gutter between each hanger.



To avoid weak spots, hundreds of hangers would need to be added, but this is not a very efficient practice



With a Continuous Hanger, the rain gutters are reinforced along their entire length.

# Gutter Hanger Systems



## Next-Gen Gutter System

### DoublePro® Microfiltration Continuous Hanger™

The DoublePro® combines the strength of the Continuous Hanger™ with the benefits of a microfiltration leaf guard, placing it at the forefront of the market by offering the most advanced technologies in gutter systems. Its unique design features two layers of ingeniously perforated industrial-grade aluminum, preventing even the finest debris from entering the gutter while ensuring rainwater flows away from your home. Furthermore, its exceptional strength is ensured by its Continuous Hanger™, allowing it to support up to 425lb per linear foot along the entire length of the gutter.

We highly recommend that all our customers consider the advantages of this revolutionary Alu-Rex product before making a final decision on their gutter system.

**Watch the Video** 

[Link this video to the “watch button”  
<https://vimeo.com/340465756>]




## Ultra-Durable Gutter System

### T-Rex® Continuous Hanger™

Our gutter installation experts have made T-Rex® their standard for fastening gutters, thus establishing a high-quality standard. With a design featuring an integrated continuous hanger™, this product stands out for its ability to support up to 250lb per linear foot, ensuring optimal gutter stability along its entire length. Its durability is guaranteed for life, providing our customers with absolute peace of mind regarding its unparalleled strength.

Opting for T-Rex means choosing a gutter solution that is not only reliable and resilient but also ensures peace of mind.

**Watch the Video** 

[Link this video to the “watch button”  
<https://vimeo.com/alurex/trex-en>]

## Gutter Guards Page Preview:

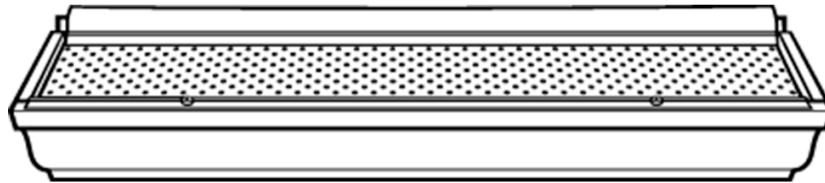
### Gutter Guard and Protection

If you've ever had to clear eavestroughs clogged with decaying debris or hire a contractor to excavate your property and fill cracks in your foundation, you understand the importance of having an effective rainwater drainage system for your home. Overflow caused by clogged or cracked gutters increases the risk of water seeping under roofs or into basements.



### gutter clean<sup>®</sup>

We carry Alu-Rex gutter guards—long-lasting solutions to protect your most important investments. The gutter guards we install on existing eavestroughs are part of our Gutter Clean System<sup>®</sup> line. They keep your gutters clear all year long, even protecting them from ice and snow in the winter. By blocking debris and preventing ice from forming inside your gutters, Alu-Rex gutter guards keep water away from the fascia and your basement.



## Gutter Guards Page Content:

### Gutter Guard and Protection

If you've ever had to clear eavestroughs clogged with decaying debris or hire a contractor to excavate your property and fill cracks in your foundation, you understand the importance of having an effective rainwater drainage system for your home. Overflow caused by clogged or cracked gutters increases the risk of water seeping under roofs or into basements.



We carry Alu-Rex gutter guards—long-lasting solutions to protect your most important investments. The gutter guards we install on existing eavestroughs are part of our Gutter Clean System® line. They keep your gutters clear all year long, even protecting them from ice and snow in the winter. By blocking debris and preventing ice from forming inside your gutters, Alu-Rex gutter guards keep water away from the fascia and your basement.